

**“Is there a washing concept that provides me and my customers with complete freedom?”**

Our JetWash systems offer flexible solutions for any location size.

**“Who offers the solutions my customers expect from me?”**

---



# WashTec provides the answers for your business.

---

The car wash business has high demands, and no one knows this as well as WashTec. We revolutionised the car wash market – and have since led the way for more than 50 years, providing highly efficient washing technology, optimised chemicals and comprehensive services for your business.

## **Our approach is simple:**

In everything we do, we not only focus on achieving the perfect result, we make the people we serve our top priority. Everyone expects to be able to get optimal cleaning and care for their car from every self-service system. Results are important, but so is how we get there:



### **We understand your needs.**

We listen carefully to what your customers say they want – and to your requirements as a business.



### **We meet – and exceed – expectations.**

Our solutions are consistently geared towards your wishes and expectations, and they more than meet these.



### **We support your business.**

We provide a car wash experience and finish that impresses your customers and earns their loyalty, giving you repeat business.



### **We improve your cost-efficiency.**

We offer robust, low-maintenance, durable technology and extremely efficient washing chemicals – for maximum profit at minimal cost.







# “How do you combine economic efficiency with quality?”

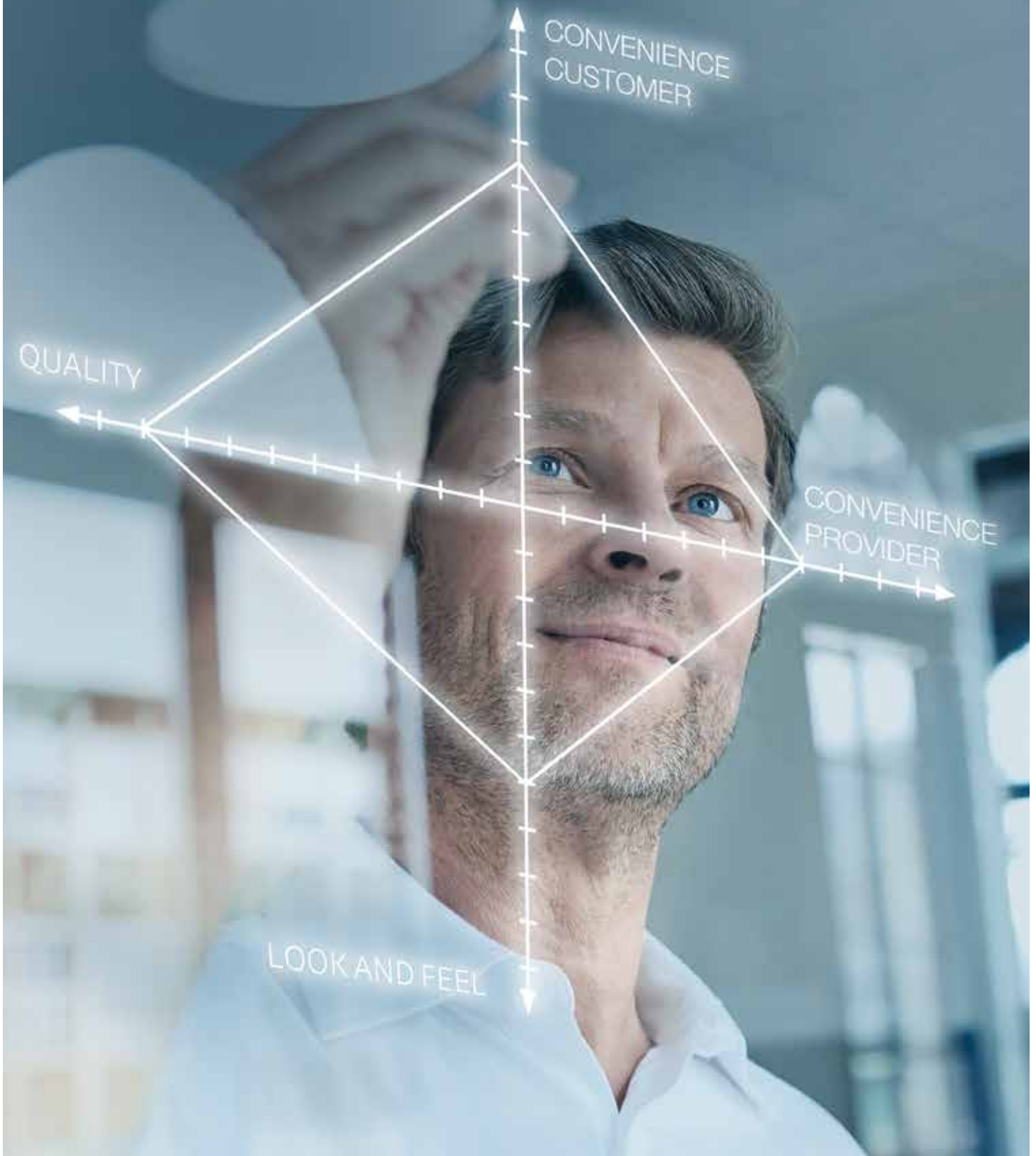
---

With **JetWash**, you'll increase revenue and customer satisfaction.

---

- **Absolutely flexible:** Whether one or eight washing spaces, rack or container system – JetWash accommodates all of your needs.
- **More chances to increase revenue:** Thanks to low operating costs and longer maintenance intervals, you'll be able to increase your revenue.
- **As varied as never before:** Special programmes mean that you can adapt each wash to the requests of your client.
- **Ease of use:** Intuitive handling, an intelligent set-up and technical extensions guarantee a highly satisfying washing experience.

# “How do I find the right washing system for my purposes?”





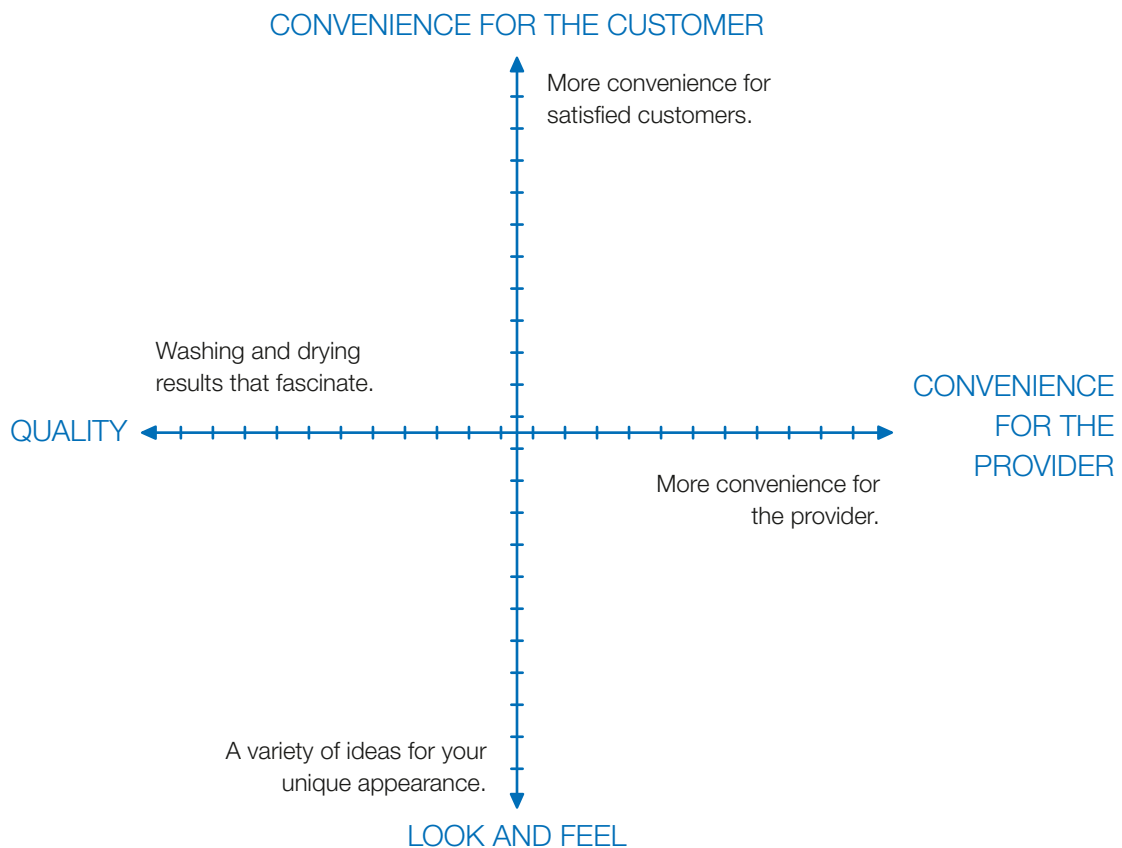
# 4DIMENSIONS for your successful washing business.

Is there such a thing as a self-service car wash that offers many useful functions, an unbeatable economic efficiency whilst ensuring highest quality at the same time? That's easy to use and impresses with impeccable washing results?

JetWash fulfils the highest demands that you or your customers might have in terms of washing quality, design and ease of use like no other. Four arguments that we at WashTec describe as the **4DIMENSIONS** of modern car washing.

JetWash self-service car wash systems combine all these dimensions to a washing experience that will delight you as a provider as well as your customers.

Discover the new dimensions of car washing with 4DIMENSIONS – and be sure to use JetWash systems as your guarantee for utmost satisfaction and for your successful car wash business.



**4DIMENSIONS for every demand.**

Our 4DIMENSIONS allow individual solutions for every requirement. As a provider, you yourself can decide which parameters are important to you. We make sure that you'll have a solution at hand that's perfectly tailored to your demands and to the wishes of your customers.





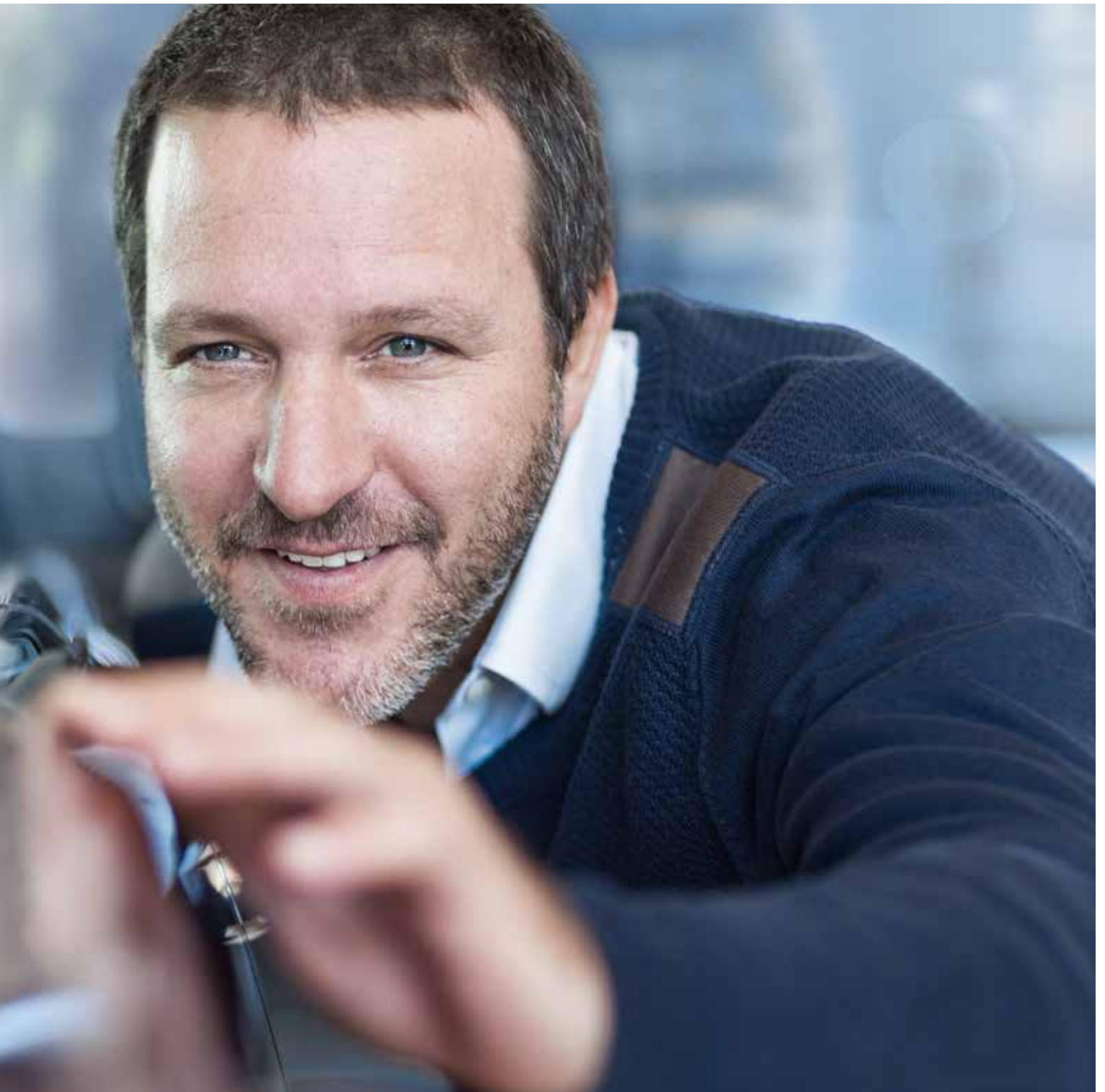
**“How can I achieve a higher turnover?”**

---

With a car wash finish that exceeds all expectations.

---





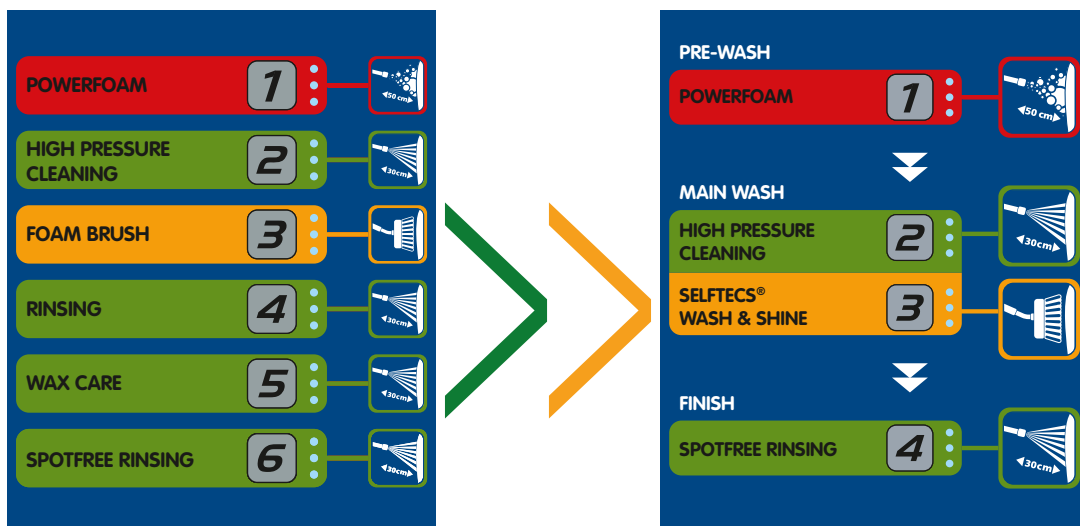
A car wash isn't always a car wash. The same goes for cleanliness. With JetWash, your customer can decide on the degree of finishing touches. How? With effective

washing chemicals and technical features that result in an impressive wash and sheen whilst increasing satisfaction and your revenue.

# Wash & Shine: Our SelfTecs concept.

## Selective application of chemicals for an optimal effect all over.

Even the best chemicals only live up to their full potential if they're applied correctly. In our JetWash systems, the chemicals always get to where they're needed. This guarantees an economic and targeted use.



## Simplified washing and better washing results.

With our SelfTecs® concept, we at WashTec make self-service car washing even easier for your customer. Washing and maintaining shine can now be accomplished in only one step by using the SelfTecs® chemicals by AUWA. The result: an entire car wash in only three steps. That's what we call experience and effect.

Why not use the simplicity of the new concept with its three steps as a distinctive feature that separates you from the rest?



## AUWA chemicals: The successful formula for your washing business.

Washing chemicals by AUWA are the perfect addition to WashTec car wash systems. As our own subsidiary, AUWA has been at home in the car wash business for over 40 years. Like no other, AUWA is well acquainted with all requirements of providers and customers and adapts its product and service offers according to these demands.





# Best performance chemicals for paintwork protection and that extra sheen.



## **Prewash: The effective weapon against tough grime.**

Especially in spring and summer it's advisable to offer washing programmes that gently remove tough grime and dirt from paintwork, windscreens and windows. You'll profit from the lucrative additional business during the warm season.

For more safety all year round: The highly concentrated insect remover InsecTecs® gets rid of tough stains such as insect remains and bird droppings in an effective manner.



## **Cleaning of wheel rims.**

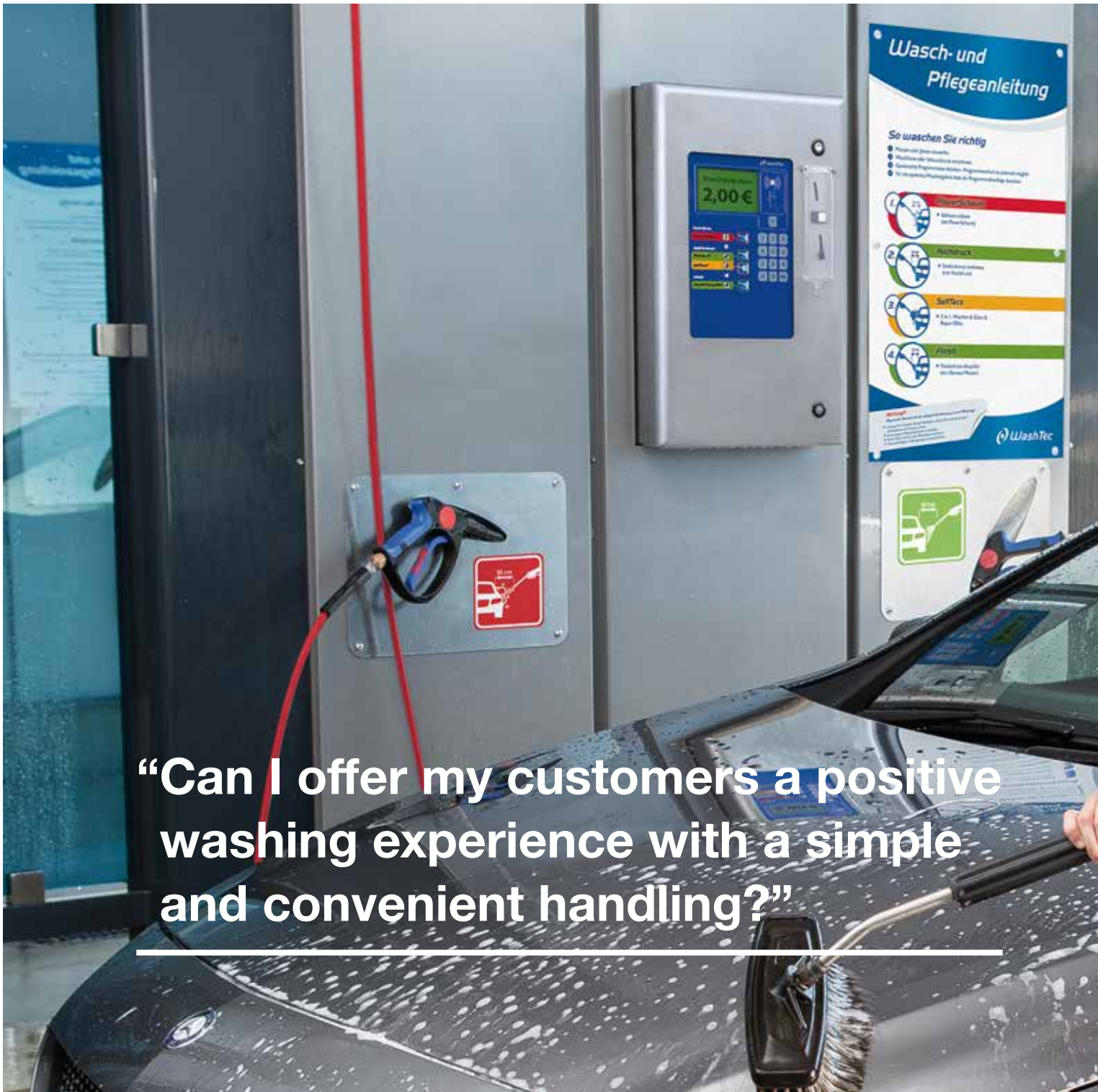
Wheel rims are especially difficult to clean. The use of high-pressure and special washing chemicals though can effectively remove tough grime. With JetWash, you can offer your customers the possibility to do so.



## **Perfect rinsing with a run-off effect effect thanks to osmosis.**

Adding a drying agent in low doses to the last step of the programme allows your customer's car to dry faster and much more effectively. Rinsing with demineralised water leaves no room for blotches thereby guaranteeing a washing result that both you and your customer will appreciate.





**“Can I offer my customers a positive washing experience with a simple and convenient handling?”**

---

Smart solutions for easy operation and payment.

---



Your customers want to have it as simple and comfortable as possible. They don't want to bother with a complicated operation and a complex payment process. Instead, what they want is Convenience with a capital C.

With JetWash, you can now offer your customers a new dimension of convenience. Starting off with a simple operation and ending with an individual choice of programmes, you can show your customers that you take their requests seriously so that they'll enjoy coming back to you.





# Clearly arranged and functional – for the **perfect washing experience.**



Example of product with *SelfTecs*<sup>®</sup>

## Self-service colour concept – everything at your fingertips (1)

The new colour coding makes it easier for your customer to manage the WashTec car wash system. The cutting-edge colour code is adapted to the individual structure of the programme, allowing the customer to see at a glance which brush belongs to which self-service programme.

## Clearly arranged colour codes within the WashTec control panel (WOP) (2)

The respective programme steps are also colour-coded within the WashTec control panel.

## Clear view of available credit (3)

The plain text display provides customers with a constant overview of their remaining credit, so they always know how much washing time they have left and when they need to top up.



Terminal with *SelfTecs*<sup>®</sup>

## Always informed:

### Illuminated programme display (4)

The bright LEDs light up during the washing process to indicate the selected programme. An acoustic signal confirms the selection.

## Always ready to use:

### Flexible payment options (5)

The operating terminal allows for payment with coins, tokens, contact-free transponder cards (which can be topped up and reused on any of the washing systems available at the site) or prepaid wash codes.

## Maintenance-free panel for cost-efficient operation (6)

The terminal is operated by an electronic pulse that is generated when the panel is touched. With no mechanical workings, the terminal is certainly low maintenance. The closed panel protects the components behind it from splashing water.





### Frequency converter: Variable pressure for ease of use.

The pressure of the system can be individually programmed. It's a simple way to satisfy your customers whilst washing and reduces spray water as well as operating expenses. The gentle start and finish supports the customer-friendly, smooth handling.



### Optimised lances and brushes for an optimal handling.

Our lances and brushes guarantee a targeted application of all cleaning agents and less spray mist. The swivel joint on the brush and the lance's ergonomic design paired with a minimal weight allows your customer to wash comfortably and easily.



### Ceiling boom.

The specific form of the spinning tops enables lances and foam brushes to be moved about in a 360° radius. Your customer will be more free to move around without the hoses hampering each other.



### Self-service washing solutions for indoor areas.

With WashTec's self-service solutions for indoor areas, you'll enable your customers to wash their cars without being exposed to the weather – even in winter.



Smart solutions for a simple  
car wash operation.

---



# “Does reliable technology really make all the difference, delivering instant convenience to my customers?”

---



You'll only earn money if your car wash is up and running. The low-maintenance WashTec technology is definitely worth its money. High-quality components, an anti-freeze protection and individually lockable valves guarantee your system is running whenever needed.

At the same time, the frequency converter allows you to save energy, water and chemicals. And thanks to an automatic collection of inserted coins and a high protection against burglary, your earnings are absolutely safe. That's how JetWash contributes to a higher and worry-free revenue.





# Solutions for a long lasting, economic success.

## Unlimited winter operation thanks to integrated anti-freeze protection.

Cold weather is nothing to worry about. The anti-freeze protection system is activated automatically when outside temperatures drop. This keeps the water moving in circulation through the system via the nozzles and brushes and ensures continuous operation even in winter.

## Spot-free drying thanks to osmosis with activated carbon filter.

The activated carbon filter removes final dirt particles and any free chlorine found in the water, protecting the osmosis membrane effectively from potential damage and increasing its service life.

## Reduced use of freshwater through recycling of concentrates.

The system that recycles concentrates allows you to buffer water from the osmosis process and to re-introduce it into the self-service system. This reduces the burden on the water softening system and helps you save freshwater.

## Low-maintenance technology for long-term operation.

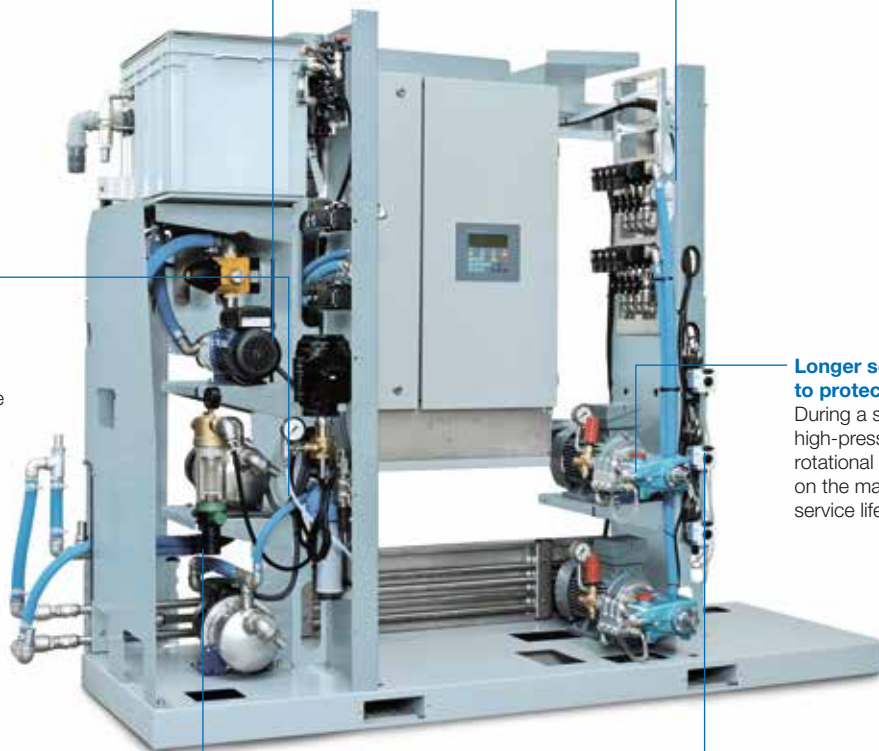
The WashTec self-service washing technology features a high-grade workmanship including chemical-resistant valves with stainless steel inlays. Should you have to service a washing bay, you can shut it down by locking the respective valve. All other washing bays will remain functional.

## Longer service life thanks to protective technology.

During a standard operation, the high-pressure pumps work at lower rotational speeds, thereby going easy on the materials and increasing the service life of your car wash system.

## Easy handling, economical operation, low-maintenance.

Every chemical programme and every washing bay has a pump each that's operated hydraulically. You don't need expensive compressed air and save on electricity, water and chemical costs whilst ensuring optimal results.





# Security whilst operating.



## Your money – safely stowed away.

The automatic coin collector transports inserted coins from the operating terminals via a pipe system directly into the engineering room. A lockable metal casing secures your earnings.



## Protection against burglary.

We've deliberately applied an electromechanical door lock so that you can do without a lock that's visible to everyone. The operating terminal and the equipment cabinet can also be additionally secured with an alarm.



## Flexible dosage (1): Liquid dosing.

Hydraulic, frequency-controlled valves enable an exact dosage of all cleaning agents needed. This allows you to operate your self-service wash system in an economical manner whilst guaranteeing optimum washing results.



## Flexible dosage (2): Powder dosing.

In high-pressure washing, powder is an effective alternative to liquid chemicals. The washing powder is continually added to the water; magnetic vibrators prevent clumps from forming and ensure a consistent washing quality. The amount of powder used can be easily regulated via the self-service system.



**“Do all car washes have to look the same?”**

---

Create a more appealing car wash experience for your customers.

---





With JetWash, washing a car won't be an annoying chore anymore. It'll be a visual and haptic experience – not only during the drive into the car wash, but also during washing. Let yourself be surprised – we promise your customers will be too.

The inviting and modern design of the system is what immediately appeals. And it has advantages in store for you too since customers are more likely to pay higher prices for an offer that suggests high quality.

## Attractive design and impeccable washing results.



### Powerfoam pistol.

Offer your customers a good foaming performance and a consistent spraying pattern with a separate, low-maintenance powerfoam pistol. The foam application ensures not only perfect results but also an extraordinary washing experience. Use it to increase the time your customers spend washing as well as your revenue. Optionally, the foam can also be applied and rinsed off with a lance.



### Illuminated attic for an improved long-distance effect.

Upgrade your steel construction and improve your appearance even from far away. The illuminated attic with a height of 600 mm can be adapted to the design of your location. The high-quality panel made from powder-coated aluminium ensures a longer service life and is individually printable.





Sheddach

**Modular self-service steel construction.**

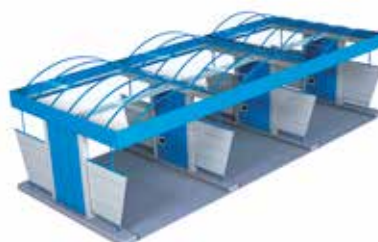
The WashTec washing bays’ steel construction is available in different roofing types and a variety of colours – so you can design your location the way you want to. The modular concept of the self-service steel construction makes an enlargement possible at any time. Additional billboards and extra equipment such as vacuum cleaners and carpet beaters add an individual touch. Your advantage? An attractive, individual and unique design that will immediately convey high quality to all your customers. You’ll also be able to distinguish yourself from local competitors – which in turn promises a higher revenue.



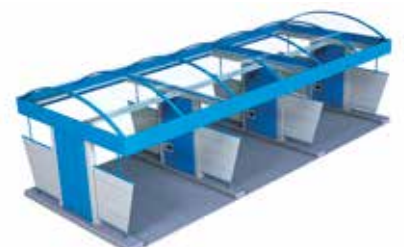
Flat roof with attic



Hipped roof



Rounded roof with attic



Rounded roof with continuous attic





# The perfect solution for every location and every assembly situation.

---



## **Rack systems for up to eight washing bays.**

Rack systems are ideal for cases in which the technology needs to be incorporated into already existing engineering rooms. The compact rack systems enable a quick replacement of older technology, no matter the architectural design of your engineering rooms. The rack systems are the core of your car wash systems and function as the basis for all our cabinet systems and container units.

The module is constructed in a clear manner and all components are easily accessible. The maintenance-friendly structure allows the system to be easily serviced and taken care of. The casing as well as the support beams are galvanised and powder coated, guaranteeing a long service life.



You can't accommodate your technology in a more space-saving manner.

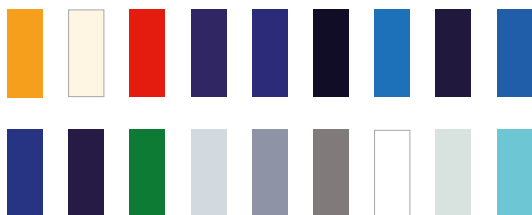
---



**Cabinet systems: Compact and easy to use for two to three washing bays.**

The cabinet systems come with all components you need to operate two to three washing bays. They're expandable by intelligent options such as an integrated anti-freeze unit.

The compact design is perfect for use on small areas.



**Individual colour schemes.**

Apart from the painted standard version, versions with stainless steel elements are also available. You can also choose from a variety of colours.

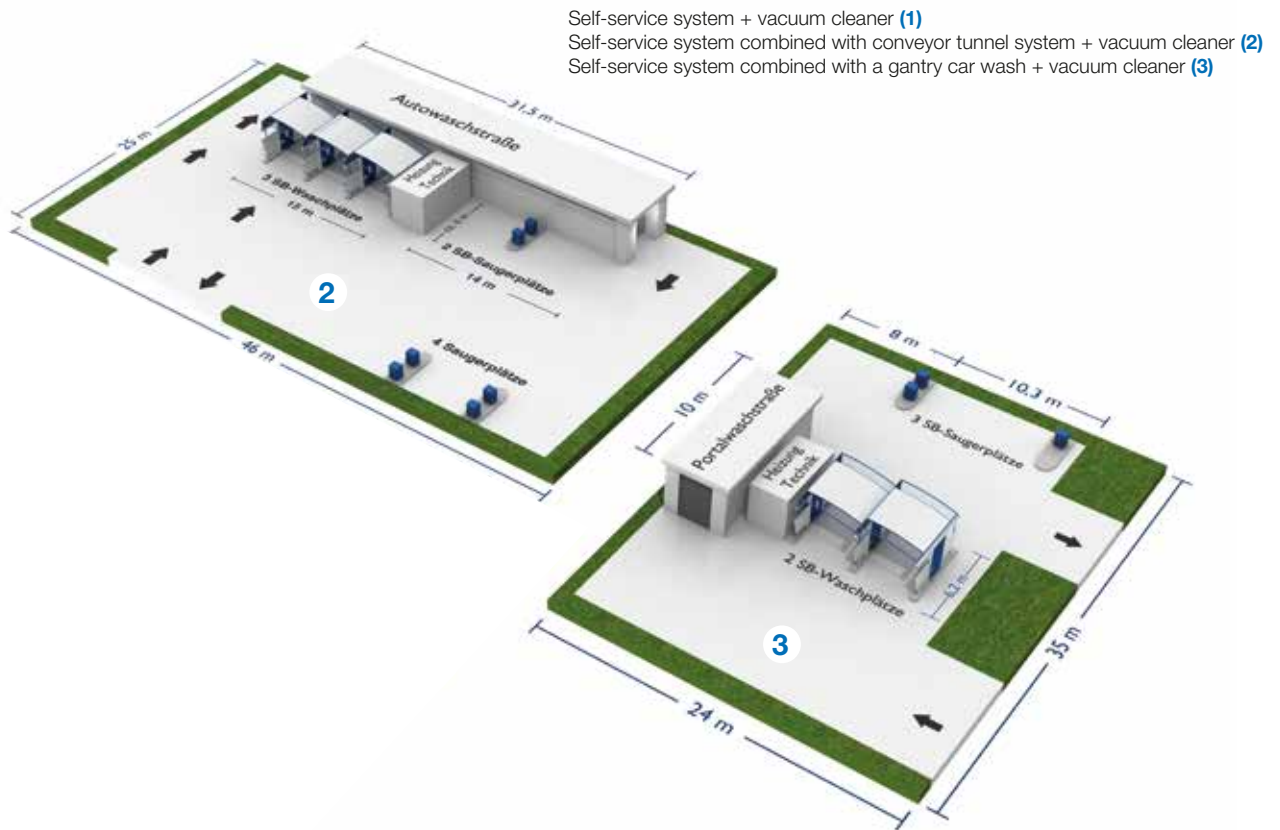


**Washing technology in a container: Pre-assembled and ready for use.**

For car wash systems that do not have an existing engineering room, we offer pre-mounted container solutions that can be equipped with the necessary power units to supply one to eight washing bays. Your advantage: it's an all-in-one solution with next to no effort on site.

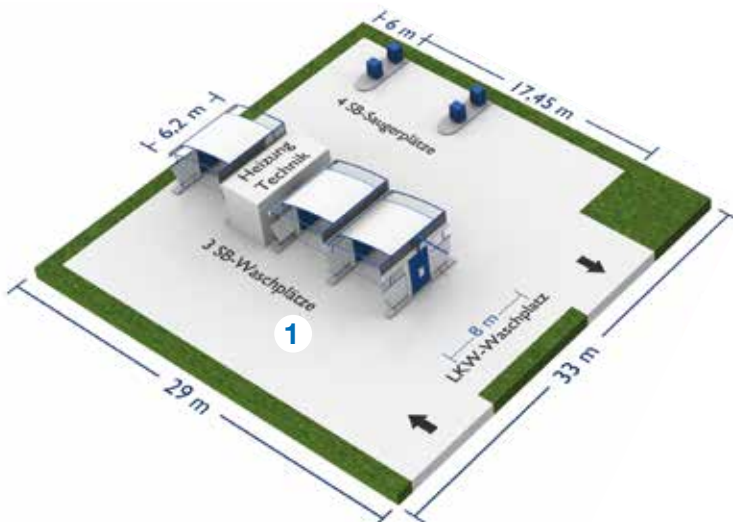


# The self-service car wash that's tailored to your needs.



## Concept and development.

Depending on the given conditions of the location, the self-service bays can be either closed at the head or constructed as a drive-through. Even if you've already got a brush washing system installed but have some more space, an additional self-service car wash is always profitable as the technology needed for both systems can be put together in a single room. Upon request, we'll support you in planning and developing a new location and its equipment.







Indoor washing system



**Compact steel construction:** The probably most cost-efficient solution, either with a flat or with a round roof (flat roof with an attic). A combination of gantry and self-service car wash bays.

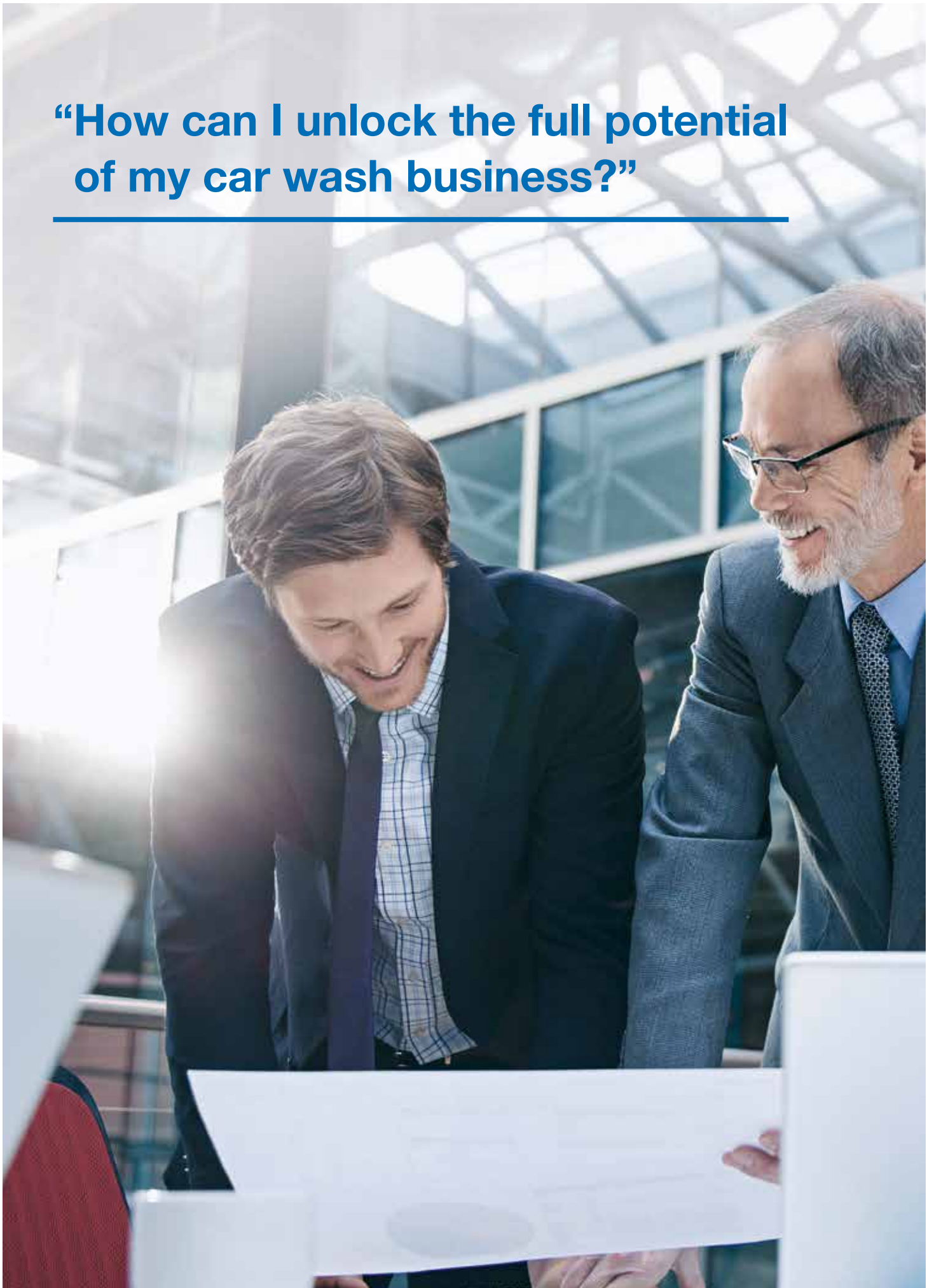


**Design steel construction:** The flexible solution with a maximum choice of colours, roof types and partition wall materials (shed roof).



# “How can I unlock the full potential of my car wash business?”

---





# With WashTec's comprehensive service package.

---

The success of your car wash business is decided long before you open for business. WashTec supports you through the entire process, from initial planning and financing to running operation. As a market leader in the car wash industry, we know what your successful business depends on and offer a comprehensive range of complete services from a single source. JetWash not only provides an entirely new experience for your customers, but also for you.



## **Competent planning:**

### The basis for your successful business

Each car wash site is different, just as each car wash clientele has specific requirements. We help you to choose and configure your JetWash washing systems. We analyse potential sites according to their strengths and weaknesses, and, if desired, also take on site planning and potential analyses. The result: a solid basis for your successful business.



## **WashTec Financial Services:**

### Your go-to for finance

WashTec Financial Services is your first contact when it comes to financing your system. Whether you are interested in leasing or a hire-purchase scheme, we can provide individual advice and find the best solution for you with a contract that is precisely tailored to suit your needs. We also help you to draw up a profitability calculation and offer attractive terms and conditions.



## **WashTec Marketing:**

### Ideas for optimal success

A successful car wash business also needs powerful marketing. We can provide you with support in this area from day one onwards – from conducting site and target market analyses to developing a marketing concept just for you, supporting you as it is implemented and helping you to monitor its success afterwards. We offer a number of advertising media that can be used to attract new customers and appeal to existing customers. It's very easy: simply order your advertising choice from the WashTec CarWash shop.



## **Maintenance and support:**

### Service the way you need it

Downtime costs time and money. That's why keeping your car wash in smooth running order is our top priority. Our maintenance concepts are tailored to your individual needs and ensure constant availability of your system. And if you do hit a snag, our service network has over 200 experienced employees that provide you with perfect support using state-of-the-art commercial vehicles and online management systems.



# Online car wash management: WashTec Plus.

If you operate one or multiple systems on various sites, the digital WashTec Plus management system gives you ultimate control over all of your systems at all times and from any location. Use your tablet, smartphone or computer to ensure that all systems are operating smoothly, check turnovers or change the running time for wash-

ing programmes. It is extremely convenient, whether from your office, home or while on the go. Thanks to WashTec Plus, you can avoid downtimes, correct problems immediately and optimise your business from a central point.





## Additional equipment.



### Vacuum cleaners for that extra touch: Cleaning the interior.

A centralised vacuuming unit perfectly complements self-service units with several bays. Why not use the extra space and offer your customers a little extra so they can complement their cars' exterior with a clean interior?

The WashTec self-service vacuum cleaners are available as a single or double version and are robust and easy to maintain. A central controlling unit allows up to eight vacuum cleaners to be used at the same time. The customer simply chooses the vacuum cleaner he wants to use. For the simultaneous use of several units, we suggest transponder cards that allow a standardised payment of all modules at the location.



### Money exchange machine.

Don't give away extra revenue. Our optionally available exchange machine provides your customers with bonus cards, tickets, change and receipts. Made from stainless steel, the machine's navigation on its display guarantees an ease of use. To remove the inserted and collected money safely, simply open up the back.



### Carpet cleaning machine.

The optional carpet washing machine is equipped with a powerful cleaning brush that guarantees clean carpets – fast.

# Car wash means WashTec all over the world.

---



More than **35,000** installed machines.

WashTec is used in car washes around the world – **and washes 2.75 million vehicles** a day!

Represented in over **70** countries.

More than **1,700 employees** help us shape the future of the car wash business, including over **600 service technicians**.

Over **50** years of leadership in innovation.

We set the standards in the **car wash business** – and actively push the market forward.

Separate washing chemicals from **AUWA**.

**Perfectly tailored** to our systems and the requirements of businesses and their customers.

[www.washtec-uk.com](http://www.washtec-uk.com)



Forest Stewardship Council  
certified paper